

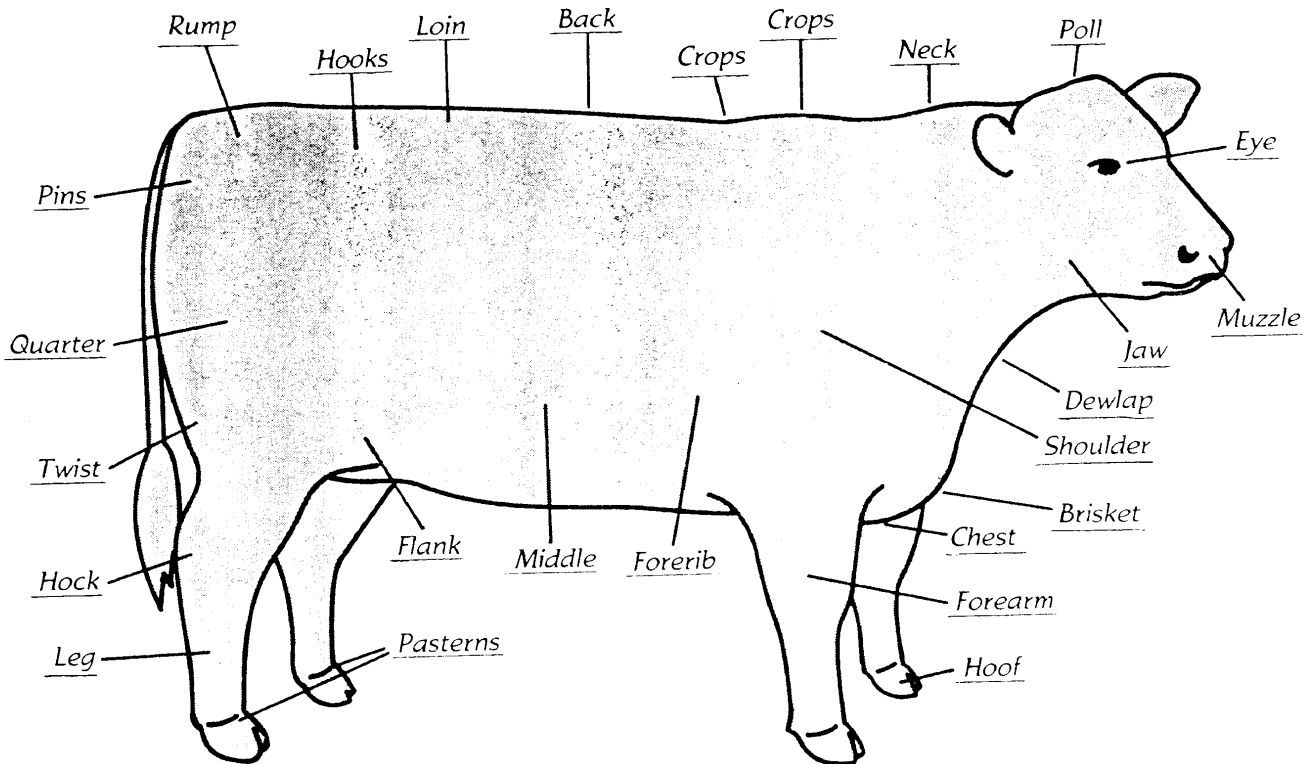
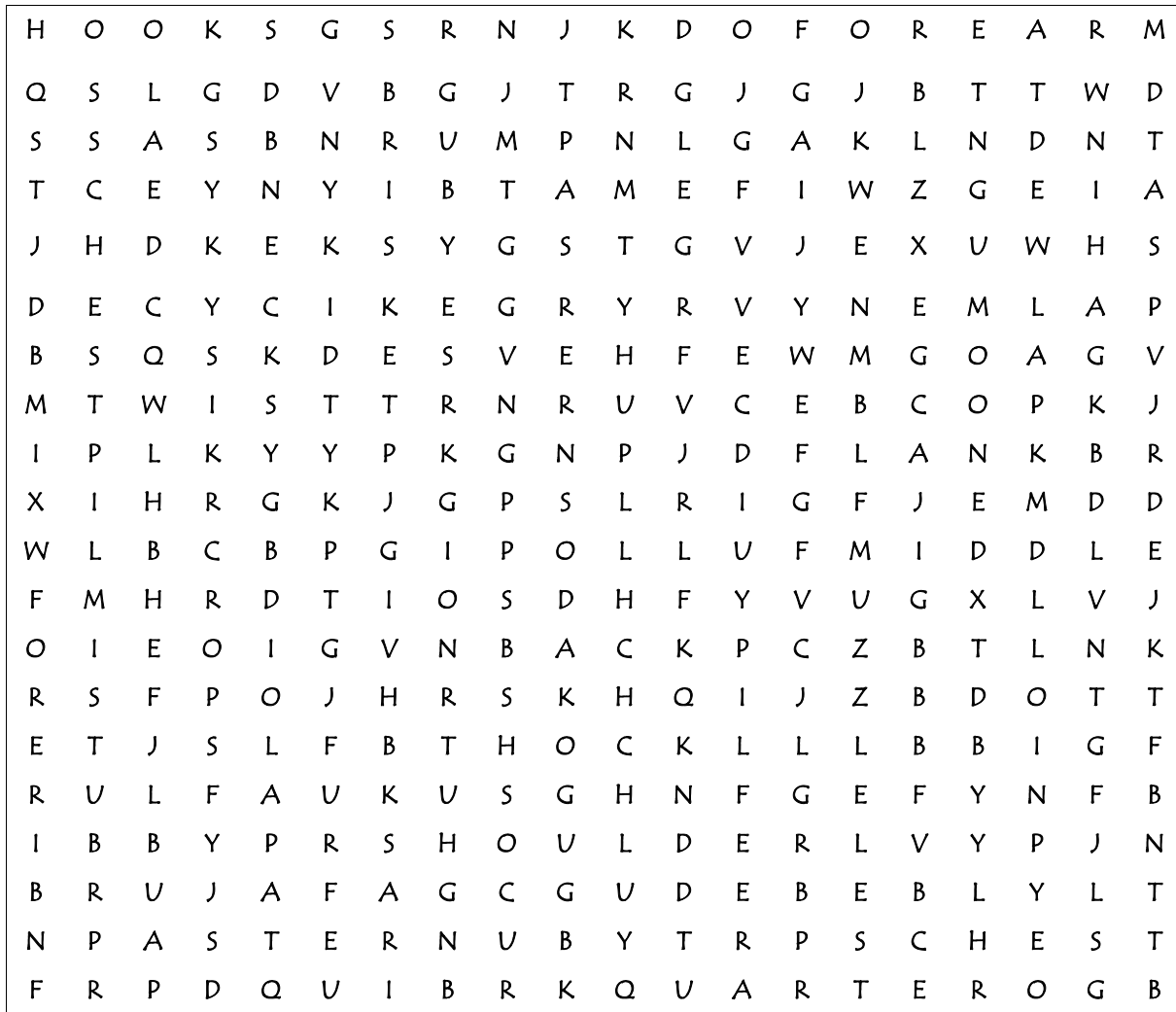


The "Golden" Activity Guide

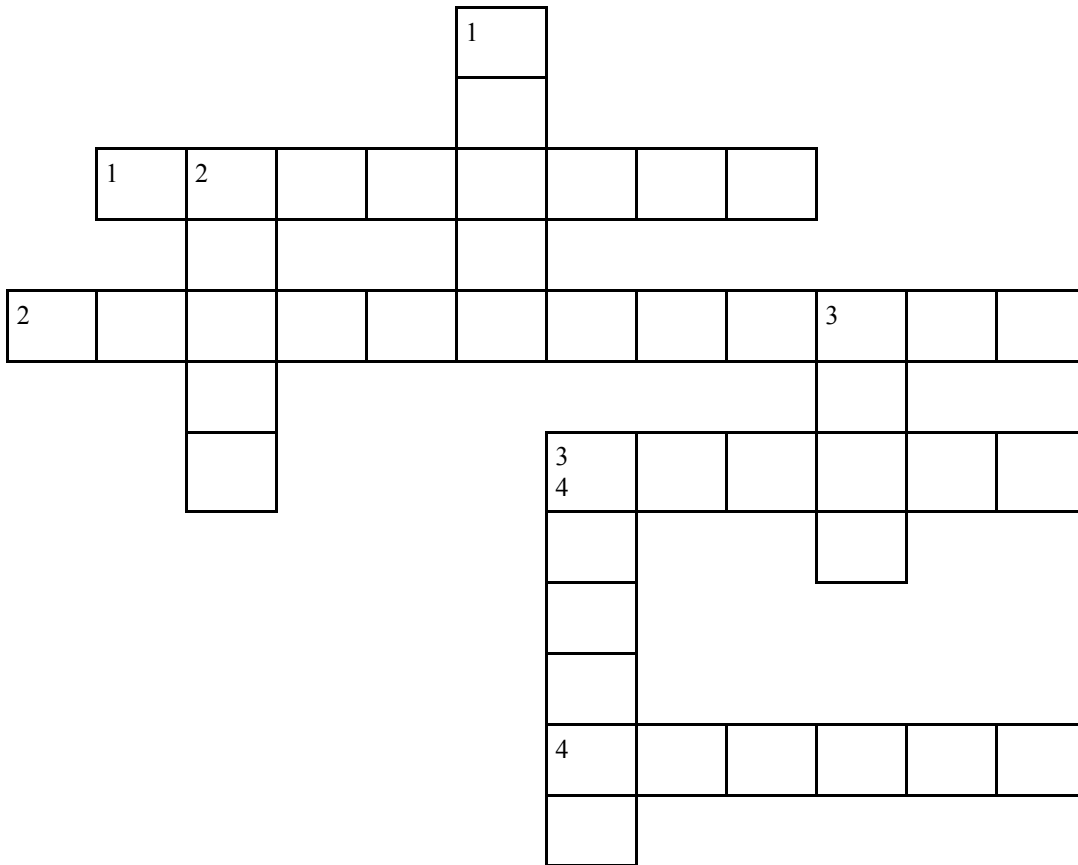


Share our love of Gelbvieh Cattle

Parts of the Gelbvieh Cow—word search



Crossword Magic



Clues Across:

1. As good mom's, Gelbvieh cows are considered _____.
2. The average birth weight of a Gelbvieh calf is _____ pounds.
3. Gelbvieh animals that are not born with horns are called _____.
4. As a quiet breed, Gelbvieh are termed to be _____.

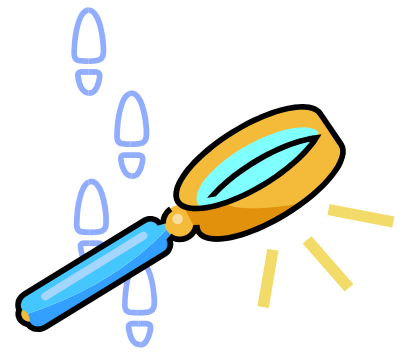
Clues Down:

1. In 2012 Gelbvieh will have been in Canada for _____ years.
2. Balancer is the term for a Gelbvieh that is bred with a purebred of this breed.
3. Traditional colour of the Gelbvieh that came to Canada in 1972.
4. Gelbvieh will add _____ to a cross breeding program.

Answers:

DOCILE	POLLED
EIGHTY-EIGHT	POUNDS
ANGUS	GOLD
FORTY	MATERNAL

Detective

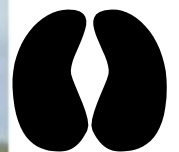
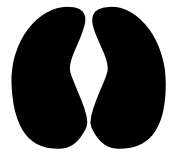
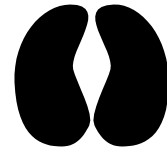


Rancher Rob needs your help to figure out how old his Gelbvieh cow named Gerti is. Can you help?

Facts:

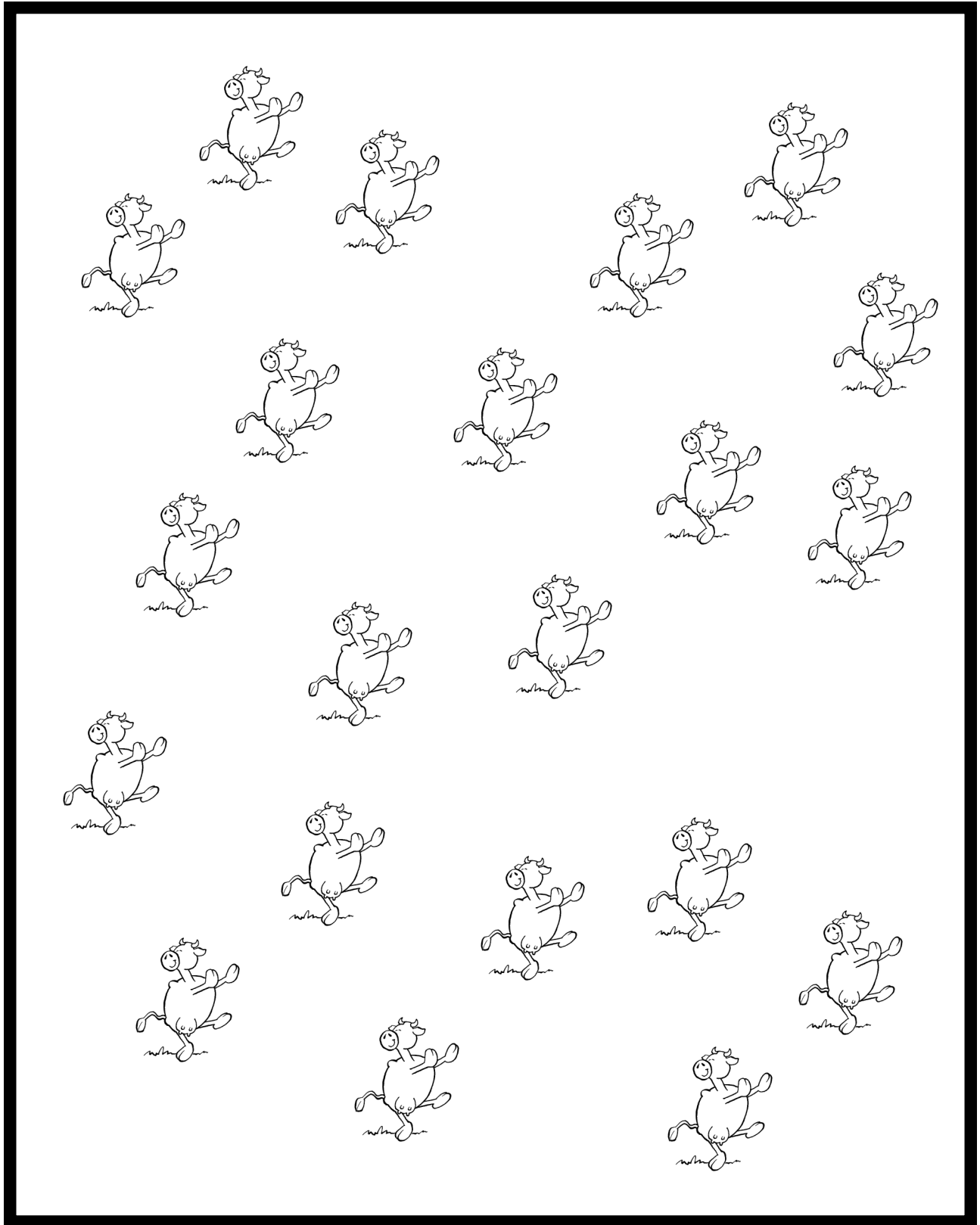
1. Gerti was two years old when she had her first calf.
2. Gerti has had three heifers and two bull calves.
3. Each year she has had one calf, except for one year when she had a set of twins.

How old is Gerti now?



Guess the Number of Cows

Don't count, just guess the number of cows in the pasture. _____

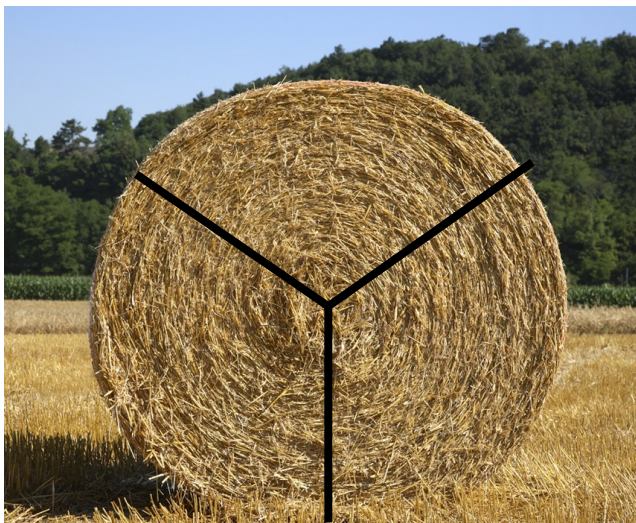


Now count them, how many are there? _____ How close were you?

Equal Parts

Cows love to eat hay. Our Gelbvieh producer has cut the bales below in equal parts. Each bale is the same size and shape as the other.

- Can you draw a circle next to the bale that has been cut in 2 equal parts?
- Can you draw a square next to the bale that has been cut into 4 equal parts?
- Can you draw a triangle next to the bale that has been cut into 3 equal parts?



Create Your Own Gelbvieh Cow!

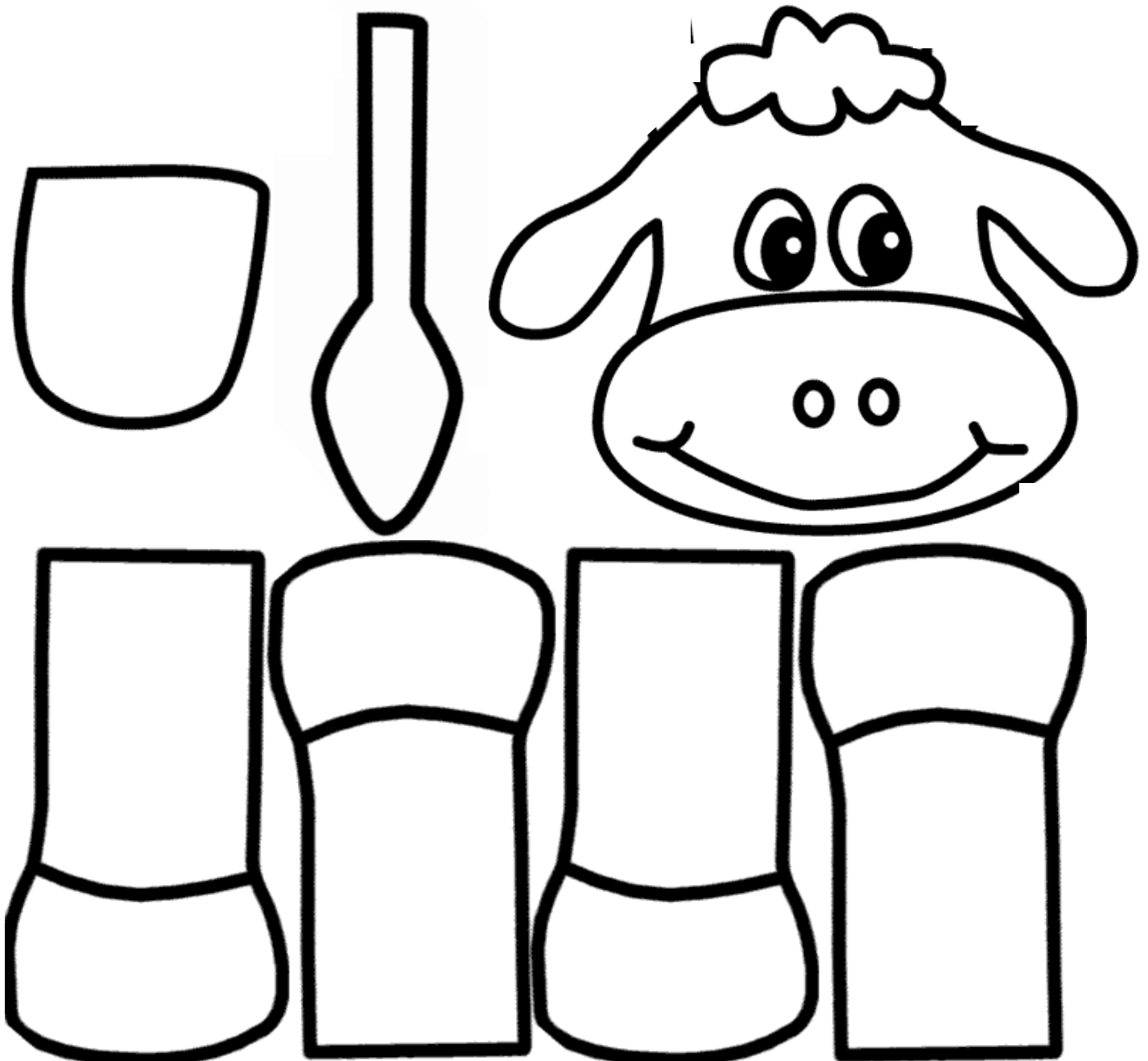
Create your own Gelbvieh puppet following these simple steps:

Materials:

- Red, Black or Gold crayon or marker, pink crayon for the tongue, scissors, glue, brown paper bag

Steps:

1. Select the colour of Gelbvieh you would like to create. Choose from Red, Black or Gold and colour all parts except the feet (unless you select black) and the tongue should be coloured pink.
2. Using the scissors, cut out the parts of our cow.
3. Glue the head to the bag with the tongue under the folded bottom of the bag. Glue the leg pieces onto the sides of the brown bag, and don't forget her tail!





Check us out today - www.gelbvieh.ca